



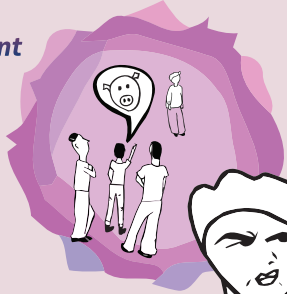
[www.combatbullying.eu](http://www.combatbullying.eu)

@ [info@combatbullying.eu](mailto:info@combatbullying.eu)

# Combat Bullying in Schools

Children who experience bullying are at increased risk for **depression, anxiety, and poor school adjustment**

**70%**  
of young people have *experienced* some form of **bullying**



**1 000 000**  
children are bullied **every week**  
inside and outside of school



**Bullying is the biggest concern for children as they grow up...**

**"Combat Bullying: A Whole School Program" (ComBus) aims to fight bullying in schools by developing a whole school program that supports directly:**



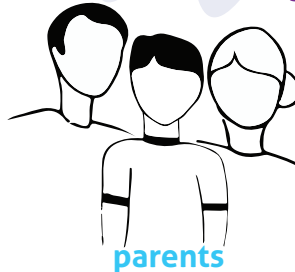
**students**



**school staff**



**teachers**



**parents**



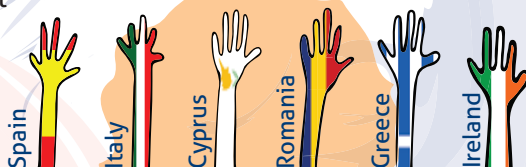
**school leaders**



This project has been funded with support from the European Commission. This publication [communication] reflects the views only of the author, and the Commission cannot be held responsible for any use which may be made of the information contained therein. Project Number: JUST/2014/RDAP/AG/BULL/7698

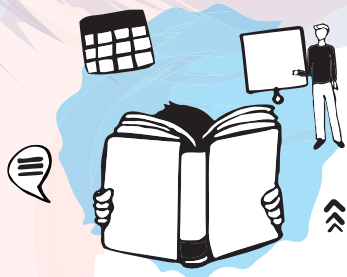
# ComBUS Objectives

- Conduct literature review and analysis of the needs of students, teachers, school staff, school leaders and parents in 6 European countries
- Build a participatory, whole school program (ComBUS Toolkit) that will engage students, teachers, school staff, school leaders and parents in fighting bullying using blended (face-to-face, online and mobile) methodologies, tools and activities
- Implement the program in at least 2 schools for each of the chosen 6 European countries
- Disseminate the model widely in the EU



# ComBUS Toolkit

- ComBUS Online Platform and Digital Tools
- ComBUS Mobile Application
- Blended Learning Modules for School Leaders, Teachers, School Staff and Parents
- Experiential Workshops for Students
- Peer to Peer Support Guidelines



- ComBUS Classroom Activities
- Reading Against Bullying
- Material for thematic school days
- ComBUS Evaluation Rubrics
- ComBUS Implementation Guidelines
- Localization and adaptation in national contexts

Project Partners:

